

DT 1.5

COL 541 6249 002

EQUIP. TYPE R300A/URR EXP. NO.

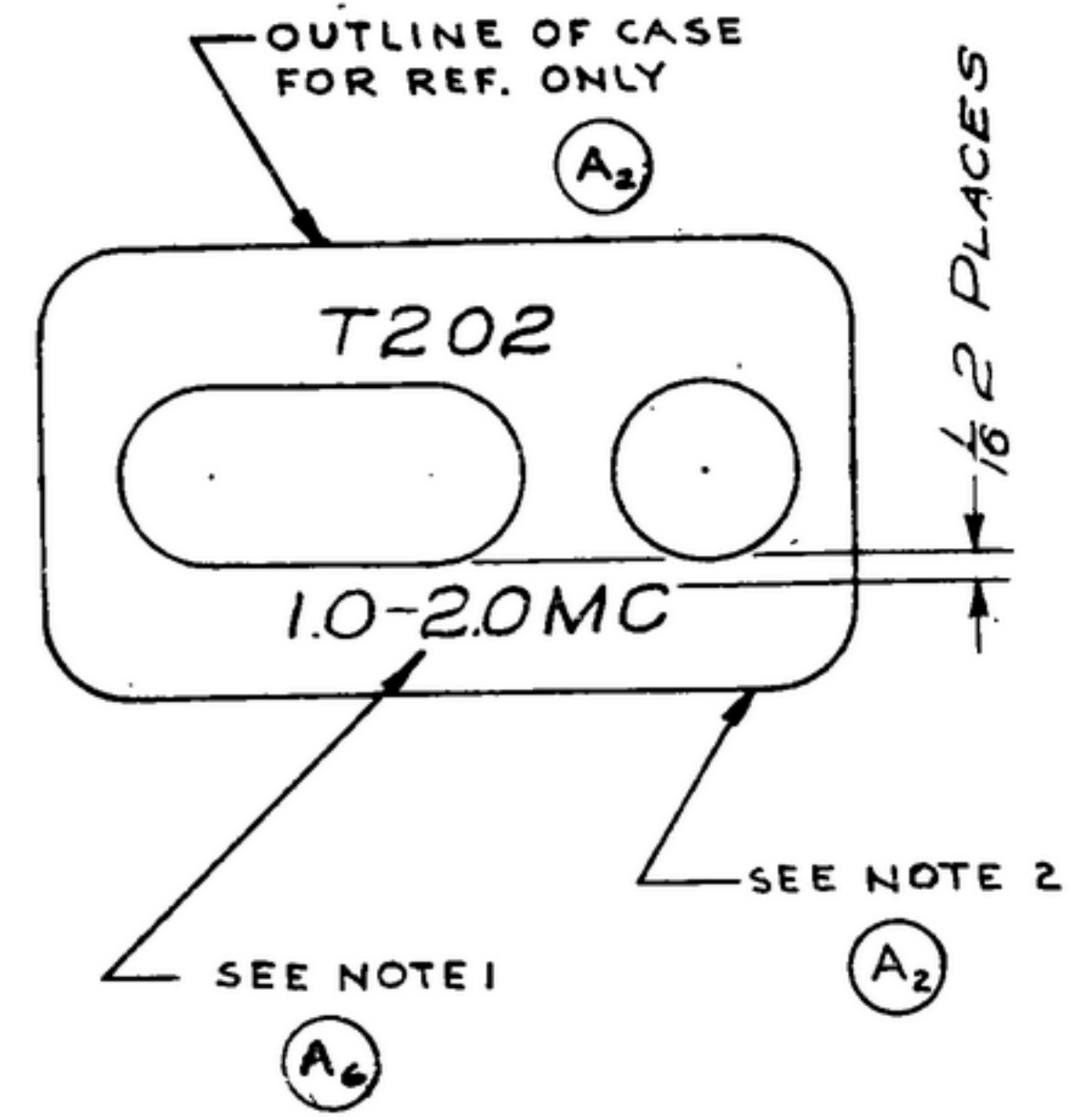
NOTICE: WHEN GOVERNMENT DRAWINGS, SPECIFICATIONS, OR OTHER DATA ARE USED FOR ANY PURPOSE OTHER THAN IN CONNECTION WITH A DEFINITELY RELATED GOVERNMENT PROCUREMENT OPERATION, THE UNITED STATES GOVERNMENT THEREBY INCUR NO RESPONSIBILITY FOR ANY SOLIDATION WHATSOEVER, AND THE FACT THAT THE GOVERNMENT MAY HAVE FORMULATED, FURNISHED, OR IN ANY WAY SUPPLIED THE SAID DRAWINGS, SPECIFICATIONS, OR OTHER DATA IS NOT TO BE REGARDED BY IMPLICATION OR OTHERWISE AS IN ANY MANNER LICENSING THE HOLDER OR ANY OTHER PERSON OR CORPORATION, OR CONVEYING ANY RIGHTS OR PERMISSION TO MANUFACTURE, USE, OR SELL ANY PATENTED INVENTION THAT MAY IN ANY WAY BE RELATED THERETO.

THIS DOCUMENT HAS BEEN PURCHASED BY THE GOVERNMENT AND MAY BE REPRODUCED AND USED IN CONNECTION WITH ANY GOVERNMENT PROCUREMENT OR MAINTENANCE OPERATION.

* FOR INFORMATION ONLY. CONTRACTOR MAY AT HIS OPTION DEVIATE FROM THESE PROCESS DETAILS.

X SWE APPROVAL
SYM | PR10042-13

REVISIONS			
SYM	DESCRIPTION	DATE	APPROVAL
A ₆	A ₁ NOTE 1 WAS "SILK SCREENING TO BE BLACK, ETC." A ₂ ADDED CALLOUT A ₃ DELETED ITEM 2, SM-B-249173 A ₄ DWG TITLE WAS "CAN-ANT" A ₅ NOTE 2 WAS "SILK SCREENING IN ACCORDANCE WITH COLLIN SPEC. ETC" A ₆ SEE NOTE 1 REPLACED SILK SCREEN NOTATION	20 NOV 59	42428-PC 59-AI-51 REV'D PME
B	(1) REMOVED "SM"	31 OCT 61	42428-PC-59 REV'D PME



- NOTES:
- 1. ALL CHARACTERS TO BE $\frac{3}{32}$ HIGH GOTHIC TYPE PER SPEC MIL-M-13231 GROUP II, COLOR TO BE BLACK, COLOR CHIP NO. 27038 PER FED. STD. 595 MARKINGS TO BE CENTRALLY LOCATED $\pm \frac{1}{32}$ UNLESS OTHERWISE SHOWN COVER DESIGNATIONS WITH ONE COAT OF VARNISH PER MIL-V-173 TYPE II
 - 2. MARK WITH PRIME MANUFACTURERS NAME OR REGISTERED TRADE MARK AND PART NUMBER PER MIL-M-13231, GROUP II.
(* STEWART-WARNER ELECTRONICS, CHICAGO, ILL D 249087)

COLLINE PART NO.	ITEM	REQD	PART NO.	DESCRIPTION	MATL	MATL SPEC
558-0405002	1	1	SM-B-249054	CAN SHIELD		

LIST OF MATERIAL

DRAWN NUGEN		CHECKED <i>R...</i>		APPROVED		GOLINE RADIO CO. -8828-RANDS-102A 14214-DH-51-93		CAN-MARKED		DEPARTMENT OF THE ARMY SIGNAL CORPS ENGINEERING LABORATORIES FORT MONMOUTH NEW JERSEY	
UNLESS OTHERWISE SPECIFIED: DECIMAL DIMENSIONS INCLUDING HOLE SIZES MAY VARY $\pm .005$ FRACTIONAL DIMENSIONS INCLUDING HOLE SIZES MAY VARY $\pm 1/64$ MACHINED ANGLES MAY VARY $\pm .1^\circ$ SHEARED ANGLES MAY VARY $\pm .55^\circ$ BROKEN ANGLES MAY VARY $\pm 1^\circ$ ECCENTRICITY BETWEEN ANY DIAMETERS ON THE SAME CENTERLINE SHALL NOT EXCEED .010 TOTAL INDICATOR READING. ALL DIMENSIONS ARE FINISH DIMENSIONS INCLUDING APPLIED FINISH AND ARE GIVEN IN INCHES.		SIGNAL CORPS		REVIEWED PME		APPROVED HLY PME					
558-0438004 + SM-D-249087 SE-DL-248775		DATE 15 FEB 56		SCALE 2/1		SM-B-249158					
APPLICATION		GOLLINE NO.		QTY		NEXT ASSY		USED ON			

WHEN REFERRING TO THIS DRAWING STATE DRAWING NO., APPLICABLE ISSUE SYMBOL, IF ANY, AND DATE